

CONCENTRIC UNIVERSITY

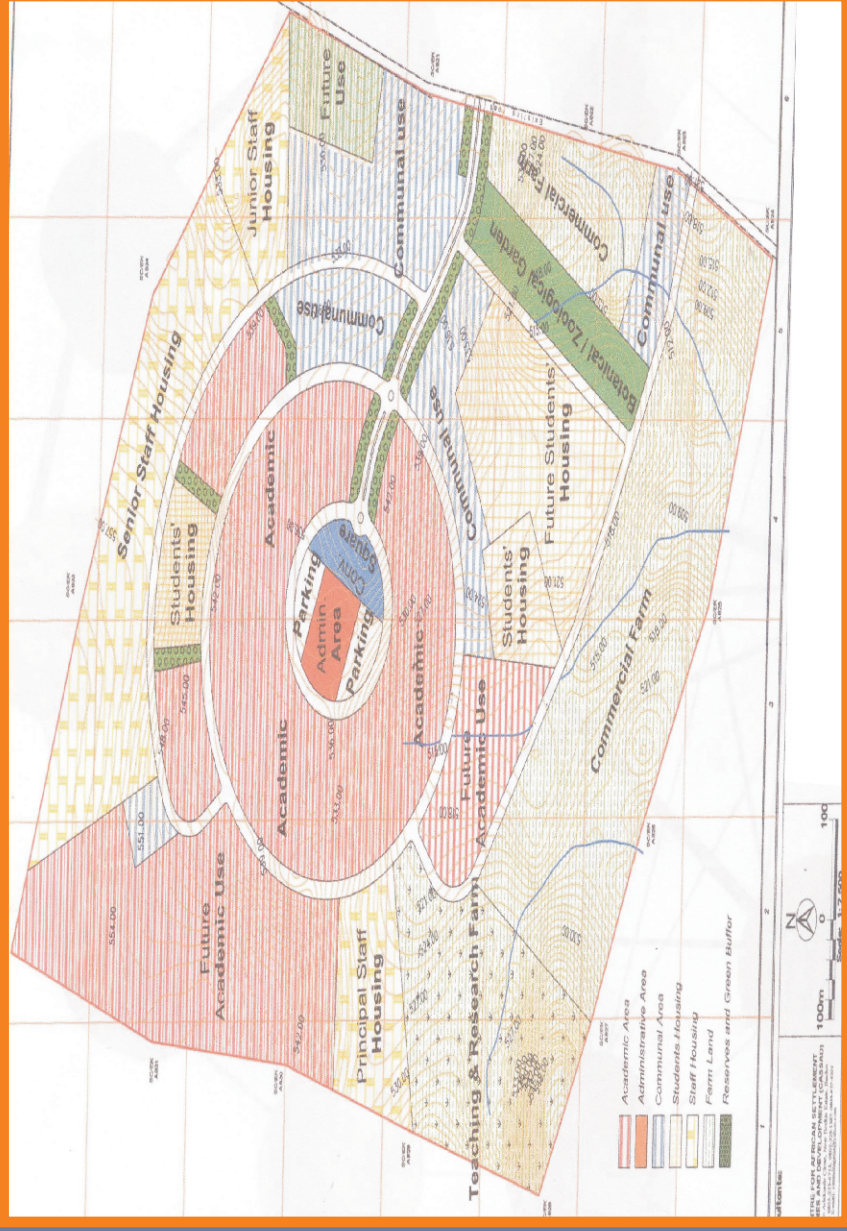
ENDOWMENT PROGRAMME



**FUNDING THE FUTURE OF
THE RISING GENERATION**

THE CONCENTRIC UNIVERSITY PROJECT

MAP OF CONCENTRIC UNIVERSITY



A CLASSROOM BLOCK



ENDOWMENT FORM

First Name	Middle Initial	Last Name
Address		
Country	City	State
Daytime Phone /Mobile Number Number	Eventime Phone/ Daytime Phone	
Email Address		

Signature..... Date.....

Select a type and Amount:

General Donation:

One time Contribution or Recurring Annual

N.....	N.....	N.....
N.....	N.....	N.....
N.....	N.....	N.....

Memorial: To make a donation.....

To make a donation in kind, please mention the item.

For more information on how to participate please contact us at Concetric University Foundation, Suit 10, Lagos Airport Hotel Plaza, Obafemi Awolowo Way, Ikeja. Tel: 09024364782/09090831750

e-mail: jmc123@hotmail.com/james@boroughcollege.com

Ways to make Gifts

We invite you to assess and review the following steps or ways that you can help Concentric University graduates make a difference and to pursue world-class research and prepare themselves to become the ultimate thinkers and achievers of tomorrow.

All gifts should be directed to the Endowment Bureau in the Vice Chancellor's Office. Any questions regarding these giving mechanisms may be directed to The Chief Investment Officer, at Concentric University or call 0902 436 4782/0909 083 1750.

Account Name: Concentric University

Bank: Skye Bank Plc:

Account No: 1770418098

Bank Sort Code: 076151420

INTRODUCTION

We at the Concentric Development Foundation Ltd/gte (RC 658062) would like to introduce our Concentric University (RC 640730) project to you as a worthy cause for your support. This project is a private university development initiative designed to provide high quality, and affordable, higher education that promises to meet the needs of our many qualified school leavers in Nigeria. These potential learners deserve a modern university that will assist them to develop their capacity to contribute their quota to Nigeria's national development efforts.

This University project is located in Igboho Town, the Headquarters of Orelope Local Government area of Oyo State in Nigeria. The choice of this Town is right in that it has produced notable Nigerian academics and professionals who currently hold important positions in Nigeria, and yet, it has been overlooked in the distribution of the location of higher educational facilities in Nigeria. It is nice to see that the University already enjoys the support of the local community, surrounding neighbours, other local and national institutions supporting the University in our mission to provide high quality higher education that meets the needs of local and national stakeholders..

In order to achieve our mission, the University has proposed leading edge and innovative programmes that will put our learners, their employers and the Nigerian society as a whole in good stead to embark on their journey to a worthwhile future.

In pursuit of our mission, the University hopes to strive for and achieve a balance between academic excellence and occupational competence so that our learners can achieve the competitive edge they need to excel in the contemporary modern world.

HISTORY



As it is, Concentric University is a modern private University promoted by Proprietors and Concentric Development Foundation; with the primary aim of providing relevant high quality tertiary education in Nigeria.

The idea of 'Concentric University' itself dates back to the 1980's when Professor James Ogunleye, a multi-disciplinary Scholar with a passion for education and management training, set up the Concentric Management Centre in Lagos. The Centre operates in conjunction with Concentric Institute (RC 642022) - an approved Partner of Olabisi Onabanjo University Consult that provides further training and education to workers in Lagos. His quest in the field of education and training brought him into a working relationship with the Edexcel International (London), Borough College London (UK), the Columbia Southern University (USA) and Universidad Azteca (Mexico) in order to provide high quality education and management training in London and Nigeria.

In 2001, Prof. Ogunleye, in collaboration with Borough College London, prepared and submitted the blueprint for Concentric University to approach the National Universities Commission (NUC) for approval in 2002 (vide NUC/ES/SCOPU/37/VOL.1. The process is currently at the verification stage and promises to conclude shortly.

S/N PROJECT ESTIMATED COST GENERAL ADMINISTRATION

1	Biological Sciences Laboratory Equipments	N30 million
2	Industrial Chemistry Laboratory Equipments	N15 million
3	Applied Physics laboratory Equipments	N15 million
4	Language laboratory Equipment	N20 million
5	Accounting Laboratory Equipment	N15million
6	Econometric Laboratory Equipment	N15 million
7	Broadcasting Studio	N15 million
8	Photocopying machines	N50 million
9	Computers	N5 million
10	ICT equipments	N8 million
11	Vehicles (Trucks) for the Works unit (2)	N12 million
12	Medical Centre	N15 million
13	Equipments for the Entrepreneurial studies	N10 million
14	University Press (Lithographic/Offset machines)	N14 million
15	Sports complex	N35 million
16	Printed Books (10,000)	N30 million
17	c. Barcode Hardware and Software	N15 million
18	Motor Vehicles (6)	N3 million
19	Transport (Buses - 3)	N36 million
20	Furniture for Chapel	N13 million
21	Biochemistry laboratory & Equipments	N50 million
22	Office Furnitures and Fittings	N20 million
23	Generating Sets	N40 million
24	Hostel Furniture	N25 million

FUNDING THE FUTURE OF THE NEXT GENERATION

S/N PROJECT ESTIMATED COST: CAPITAL FACILITIES

1	College of Management and Social Sciences Building	N300 million
2	College of Arts and Theological Studies Building	N300 million
3	College of Natural and Applied Sciences Building	N300 million
4	College of Engineering Building	N567 million
5	College of Information and Technology	N400 million
6	College of Agriculture and Veterinary Medicine Building	N383 million
7	College of Post Graduate Studies	N334 million
8	Administrative block	N177 million each
9	Classroom blocks (4)	N550 million
10	Central Library Building plus E	N550 million
11	Internet Facilities	N32 million
12	Road construction	N40 million
13	University Clinic	N240 million
14	Electric Transformers	N 50 million
15	Cafeteria/staff club (2 in number)	N177 million each
16	Laboratory Equipments/chemicals	N500 million
17	Bore holes, ground/overhead tanks (5 in number)	N50 million
18	General and Foundation Studies	N 177 million
19	Students Village and Garden	N 200 million
20	College of Post Graduate Studies	N383 million

OUR VISION

The avowed vision of Concentric University is to be the foremost modern higher institution capable of producing first rate graduates in science, technology and humanities, and enterprise that will combine academic excellence with a strong sense of ethical responsibility needed for graduates to flourish in contemporary society. The University hopes to achieve this by creating and sustaining a dynamic learning community with the cultural values of hard work, integrity, discipline and creativity.

OUR MISSION

To achieve our vision, the University intends to provide its students with integrated academic and professional education sustained by the values of the recognition of diversity and equality of access to those wishing to benefit.

The provision of cost-effective qualitative, functional and morally sound education that benefits all people, irrespective of race, colour or religion is an expensive and challenging endeavour. Consequently, the university has adopted a collegiate system as the directive principle that guides the overall operation of the university.

The following encapsulate the mission of the Concentric University.

- * Using the opportunity of its wide experience in Nigeria and overseas to combine academic, moral and professional education.
- * Producing graduates that are not only technologically prepared but also God-fearing, humane and responsive to the various challenges of the modern world.
- * Creating an environment of unlimited opportunities where teaching and learning co-exist as a life long experience.
- * Creating enabling conditions that will motivate staff and students to apply skills and their intellectual abilities for the benefits of their immediate environment and the society at large.

PHILOSOPHY

The sum-total of our vision, mission and goals derives from the process(es) adopted in the provision of high quality education through the instrumentality of, among others:

- * Sound administrative structure
- * Sound academic arrangement via collegiate system
- * Result-oriented research policy
- * Tested system of academic support
- * Balanced and up-to-date / state of the art curriculum
- * Conducive learning (Physical) environment

AIMS AND OBJECTIVES

The following are the specific objectives of the Concentric University, Igboho, Oyo State:

- * Provide access to qualitative university education for qualified candidates who seek and secure admission to the university
- * Establish a centre of academic excellence that will produce competent graduates capable of further stimulating/accelerating and maintaining the current level of socio-economic development in Nigeria and beyond, through a well coordinated system of teaching, research and manpower development.
- * Provide courses of instruction and other facilities for the acquisition of needed knowledge, skills and competences.
- * Provide opportunity for sound attitudinal change needed for sustained and sustainable national development.
- * Promote international understanding through viable and mutually beneficial cooperative (linkage) programmes with centres of excellence abroad, especially in the areas of research student exchange, staff development/exchange, etc, in pursuit of purposeful teaching, research and development.

TAKING ACTION: THE PROCESS AND OPTIONS FOR SUPPORT

(1) OUTRIGHT GIFTS

Gifts of Cash Via Cheque or Bank Payment

Gifts of cash are to be made via crossed cheques or bank payments and are very easy to make. Cheques should be made payable to "Concentric University Endowment Fund," with clear instructions specifying intent to support a specific programme, endowment or activity within the university.

(2) GIFTS OF

SECURITIES



ABOVE: ART GALLERY

Gifts of appreciated securities, such as stocks, bonds or mutual funds are deemed acceptable to the University.



FILLING STATION

(3) GIFTS OF REAL ESTATE

Gifts of homes and other properties may be transferred to the Veritas University Endowment Fund by the donor.

(4) MEMORIAL OR TRIBUTE GIFTS

Any gift may be designated in memory or honour of a 'named' individual, group or corporate body. If the 'named' individual person is deceased, the family will be notified of such gifts.

FUNDING THE FUTURE OF THE NEXT GENERATION

When you contribute, you help guarantee the future of Concentric University.

Fund these projects and ensure that a modern university is created to contribute to the development of competent workforce to take the learners and their employers to a greater height in Nigerian society.

NOTE: Your participation will complement the efforts of the Proprietors, Concentric Development Foundation and others with responsibility to provide funds for the University.

Recognizing the need to provide both a stable income stream and to maintain the endowments long term purchasing power, the trustees will work with the administration to maintain the level of annual endowment spending at below 10%

A CALL FOR SUPPORT

The promoters of Concentric University recognize that the task of providing a University of qualitative standard of this status at an affordable rate is a major venture indeed. It calls for serious commitment both materially and financially and requires the support of all well-meaning citizens in the society.

For the leading role it intends to play in the Nigerian educational system, the Concentric University showcases an attractive environmental design. Its physical structures for student hostels, staff housing, library and other facilities are a model in the field.

Plots are available on the land acquired by the university for its campus in Ighoho for any individual, group or corporate partners to build any of the proposed or other usable facilities on site.

We stress here that Concentric University Foundation requires partners like you in this great venture of promoting human capital development through education and will therefore be grateful for your support.

MEANS OF SUPPORT

Support could come through two major ways:

- * Either by outright financial donation to support the University's ongoing projects e.g. the university's library, administrative blocks, faculty blocks, students hostels e.t.c. Donours will, in addition to other privileges, have the honour of these edifices being named after them.
- * On the other hand, a donour could decide to make his contribution in form of a venture. This way, he partners with Concentric University Foundation by building one of the hostels or other facilities and, in agreement with the University, collects rental charges.

ACADEMIC STRUCTURE/ PROGRAMMES

Towards the actualization of the mission and vision of the University, at present, the University proposes a collegiate system and has colleges and the School of Post Graduate Studies: College of Management and Social Sciences, College of Arts and Theological Studies, College of Natural and Applied Sciences and College of Education. The University offers undergraduate programmes in Accounting, Marketing and Advertising, Economics, Political Science and Diplomacy, English and Literary Studies, History and International Relations, Physics with Electronics, Industrial Chemistry and Applied Microbiology.



The following programmes are proposed to commence during the 2014/2015 academic session: Mass Communication, Computer Science, Biochemistry, Christian Religious Studies and Theology, Business Administration,

Sociology and programmes of the College of Education. The University intends to commence postgraduate training in the nine programme areas.

THE CONCENTRIC LEARNING CENTRE

It is proposed that a 'state of the art' learning centre is established. This is a learning support centre providing life-long learning opportunities.
Concentric University Press Ltd.

It is proposed that **Concentric University Press Ltd** be registered by **Concentric University**. Its main function is to collate and publish scholarly works for the University. It may also carry out press related businesses.

Concentric University Consultancy Services Ltd.

It is proposed that **Concentric University Consultancy Services Ltd** be registered by **Concentric University**. The main function is to co-ordinate all consultancy activities and programmes of the University that are not housed in the mainstream departments.

FOUNDATION YEAR PROGRAMME

It is proposed that a Foundation Year Programme be established. This is to:

- * To provide foundational training for successful university education
- * To provide young school leavers leverage and easy access to higher education
- * To provide preparatory grounds for students to be successful in the Unified Tertiary Matriculation Examination (UTME) and other such preparatory examinations.

EDEXCEL ADVANCED LEVEL PROGRAMME

It is proposed that **Edexcel International A Level** be established. This is to provide direct entry opportunities for candidates who seek admission into all courses and universities in Nigeria and abroad; such as 'Awaiting-result' candidates who may have just finished **SSCE/WASCE** examinations.

Concentric Enterprises Ltd.

It is proposed that **Concentric Enterprises Ltd** be established as a registered company by the University. The main function of this outfit is to warehouse and promote all products from the Entrepreneurial scheme of the University.

ENDOWMENT FUNDING PROPOSAL

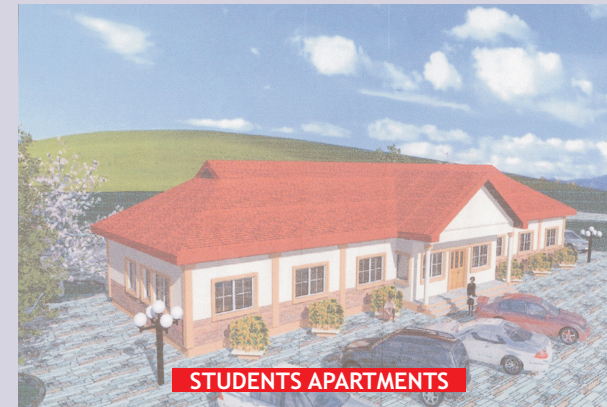
The University proposes to mobilize resources for its recurrent and capital expenditure through endowments, donations, gifts and the proprietor's funds.

There are a number of strands to our endowment funding proposition. Our endowment funding, therefore, will cover capital development, general university support, scholarship

a fundamental ongoing gift that will touch lives of students every year forever. Whatever your interest, there is most likely an area on campus that can benefit an endowment.

Endowment Investment Philosophy

The University's Investment Philosophy hinges on the need to invest with the objective of achieving reasonably stable, growing and predictable revenue stream in support of **Concentric University** educational projects. The basic investment objective established by management emphasizes seeking maximum total returns within acceptable levels of risks. However, returns must be sufficient to preserve the inflation adjusted purchasing power of the endowment less management and administrative expenses.



Endowment Valuation

Gifts to the Endowment Fund are to be invested with other endowed gifts. The Endowment Pool is established as a broadly diversified portfolio of assets including domestic equities, treasury bills, other fixed income securities and real

estate. Each new endowment gift purchases the **Concentric University** Endowment Pool at current market values. The value of the endowment pool shares is adjusted each month to reflect changes in the market value of the underlying investment.

Endowment Payout

Spending from the **Concentric** Endowment is set by the endowment spending rate that is determined yearly by the Governing Council.

Who are Endowment Fund Donors?

Endowment funds are created by donors wishing to establish permanent funds to support unrestricted programme activity namely: Scholarships, Facility Support and Professorships. When money is donated to the endowment fund, the gift will actually purchase shares in the Concentric University Endowment fund pool, which operate in a manner similar to a mutual fund. Endowed funds are named and used according to the donor's instructions. Consistent with global best practices, only the

income and related gains may be spent, the principal must remain intact. Any annual spendable income from an endowment can only be expended for the fund's specific purpose.



HOUSING APARTMENT

Concentric Endowment Fund Benchmark

The benchmark required to establish an

endowed fund at Concentric University depends on the funds intended purpose. For instance, an endowed Professorial chair can be named with a gift of N50 million or more. Some donors may choose to contribute overtime.

Concentric Endowment Target

With a projected student population of 5,000 in the next five years and in a bid to ensure that endowment income cover at least 100% of University operating expenses which budgetary will be in excess of N1 billion, year, an endowment fund target of N10 billion target has been set.

Concentric Endowment Fund Campaign

Endowments are the financial foundation of all world class universities. The goal of the Concentric University Endowment fund campaign is to provide at least N10 billion needed to ensure a stable, ongoing source of funds for scholarships, professorships, operations and other areas of campus life. By creating an endowment at Concentric, you are providing

support, operations/programmes support, academic support, departmental support, college/school support, facilities support, library support, laboratory/workshop support, etc.

CAPITAL DEVELOPMENT

We are sure that you appreciate that a lot of funds would be expended on the provision of physical facilities such as Administrative block, Classroom blocks, Hostel blocks, Cafeteria, Bore holes, Transformer, Infrastructure, E-Library, Generator, Internet facilities, Road construction and University clinic.



CENTRAL LIBRARY

We can assure you that your cash or material donations would leave a legacy of support for the building of a world-class campus for Concentric University.

The establishment and continuation of this University campus at its permanent campus is a task that can be accomplished with your

support and commitment. We will be happy to discuss with you the details of how your gift will be used, including the possibility of a named endowment.

To house all the proposed physical development, we have acquired a 1 kilometre X 1 kilometre piece of land at Igboho. Here are some explanations to shed more light on the various types of endowments:

General University Endowment

Earnings and gains from the general university endowment helps in keeping tuition cost down and enhances the University's ability to operate more efficiently, without fluctuations due to yearly tuition income disparity. Gift of any size can be made to the general endowment; however, in the event that you would like to name a portion of the general endowment, the minimum funding required is N2 million.

Scholarships Support Endowment

Without the help of endowed scholarships, many academically endowed but financially needy students will be unable to pursue their dream of studying in our University. Therefore, a scholarship endowment to enable deserving students to earn their degrees in Concentric is important. The minimum funding requirement for an endowment scholarship is N5million.

Operations, Programmes support Endowment

An endowment to enhance the University's ability to provide top quality, educational opportunities will be highly appreciated. These endowments may be established to benefit any operational or educational area on campus such as a Sport Complex, an athletic programme and University plant or equipment. Minimum funding is N5million

Academic Support Endowment

Fellowships, Professorial Chairs, Distinguished Chairs and Visiting Chairs that will propel the Concentric Advantage into full manifestation also require endowment support. Each of the endowments will enable the University to recruit and retain the very best brains available globally in every area of speciality. Specifically, the endowments will provide a pool of funds to defray or supplement a designated professor's salary, as well as his or her research and travel expenses. Minimum funding requirement is put at N50million.

Academic Department Endowment

In order to establish a world class reputation as an important centre for cutting-edge academic and research programmes, academic departments in Concentric University need modern classrooms and Laboratories. Private opportunities are available to donors at many levels and include naming opportunities for buildings, classrooms and laboratories. Modern laboratory facilities are vital to our students' training and research activities but the technology that drives cutting-edge science for instance is quite expensive and changes very quickly. The need is constant for equipment upgrade or replacement and for expendable supplies and other expenses to maintain the utility of these facilities. Minimum funding requirement is put at N20 million.

College or School Endowment

An endowment that provides the much needed funds to schools or colleges of the University to ensure that the best possible educational experience is imparted makes sense. The funding minimum to endow any of these schools and colleges is N50 million.

Facilities Support Endowment

A facilities support endowment can help meet or offset the costs associated with repairs or replacement of University facilities. These endowments can help ensure that buildings such as the Chapel, plants and equipment are in optimum condition. Minimum funding level for this endowment is N15 million.

Library Endowment

Endowments are critical to bridging the gap between library objectives and available annual funding from statutory sources. By providing a reliable funding Stream, endowment helps the Library which is the most central of the University's academic support services obtain the funds that they need to meet the growing academic needs of Concentric students and staff. You can support the University Library's collections by establishing a library endowment in the area of your choice. Minimum funding requirement is put at N15 million.

MORE ON CONCENTRIC UNIVERSITY ENDOWMENT FUND

The purpose of the Concentric University Endowment Fund initiative is to help create a self-sustaining values-centred world-class university for our students.

By accepting a gift for the endowment fund, Concentric University assumes responsibility of ensuring that the gift will provide support for its specified purpose in perpetuity.

What is Endowment?

At Concentric University, an endowment is defined as the long term investment assets of the University. These assets are invested in perpetuity, and only the income from the investments can be spent each year. Funds enter endowment from two primary sources: gifts from donors and addition to long term savings that are set aside by the Trustees. Through the endowment window, donors have the opportunity of creating endowment funds that support scholarship, professorships, prizes, awards and other university projects and programmes.

